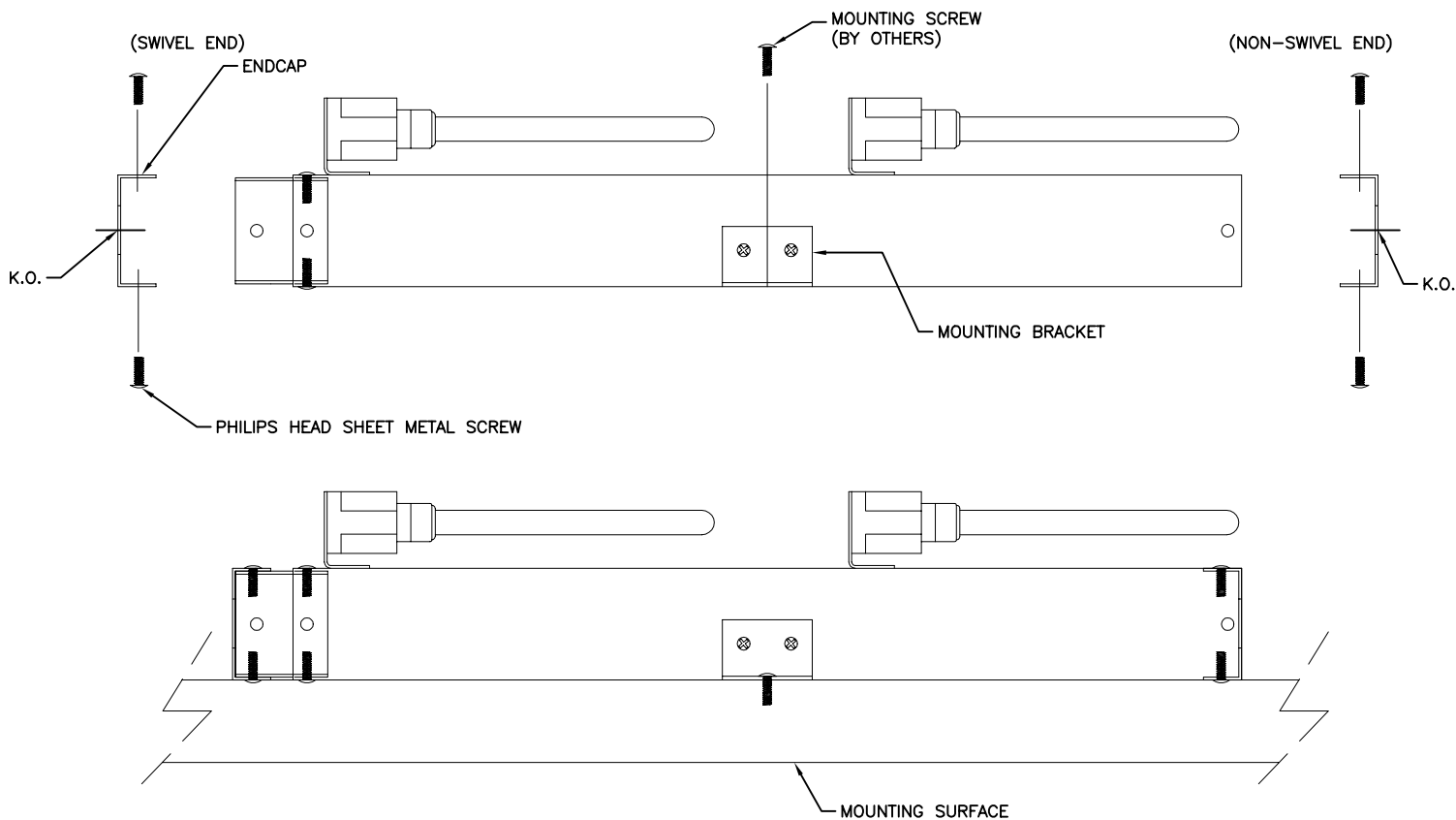


PLEASE READ ALL INSTRUCTIONS CAREFULLY.



NOTE: 2801 SERIES LAMP SHOWN. LAMPS WILL VARY WITH OTHER NX2 & FX2 SERIES.

NOTE: WIRING CAN BEGIN AT EITHER END OF FIXTURE.

WIRING INSTRUCTIONS:

1. UNSCREW PHILIPS HEAD SHEET METAL SCREWS AND REMOVE ENDCAP.
2. KNOCK OUT APPROPRIATE K.O.
3. CONNECT FITTINGS TO ENDCAP.
4. WIRE PER N.E.C. CODE.
5. REPLACE ENDCAP AND PHILIPS HEAD SHEET METAL SCREWS AND TIGHTEN.
6. REMOVE OPPOSITE ENDCAP, INSULATE AND STORE EXTRA WIRES.
7. REPLACE ENDCAP. TIGHTEN WITH TWO PHILIPS HEAD SHEET METAL SCREWS. TIGHTEN.
8. MOUNT FIXTURE TO SURFACE WITH MOUNTING SCREWS. (BY OTHERS)

NOTE: MOUNTING BRACKETS ARE ATTACHED TO FIXTURE.

\* SEE OPPOSITE SIDE FOR INSTRUCTIONS ON JOINING TWO FIXTURES.\*

REV.1 8-26-97 DK

\* ALL DIMENSIONS SHOWN ARE IN INCHES

**BELFER**

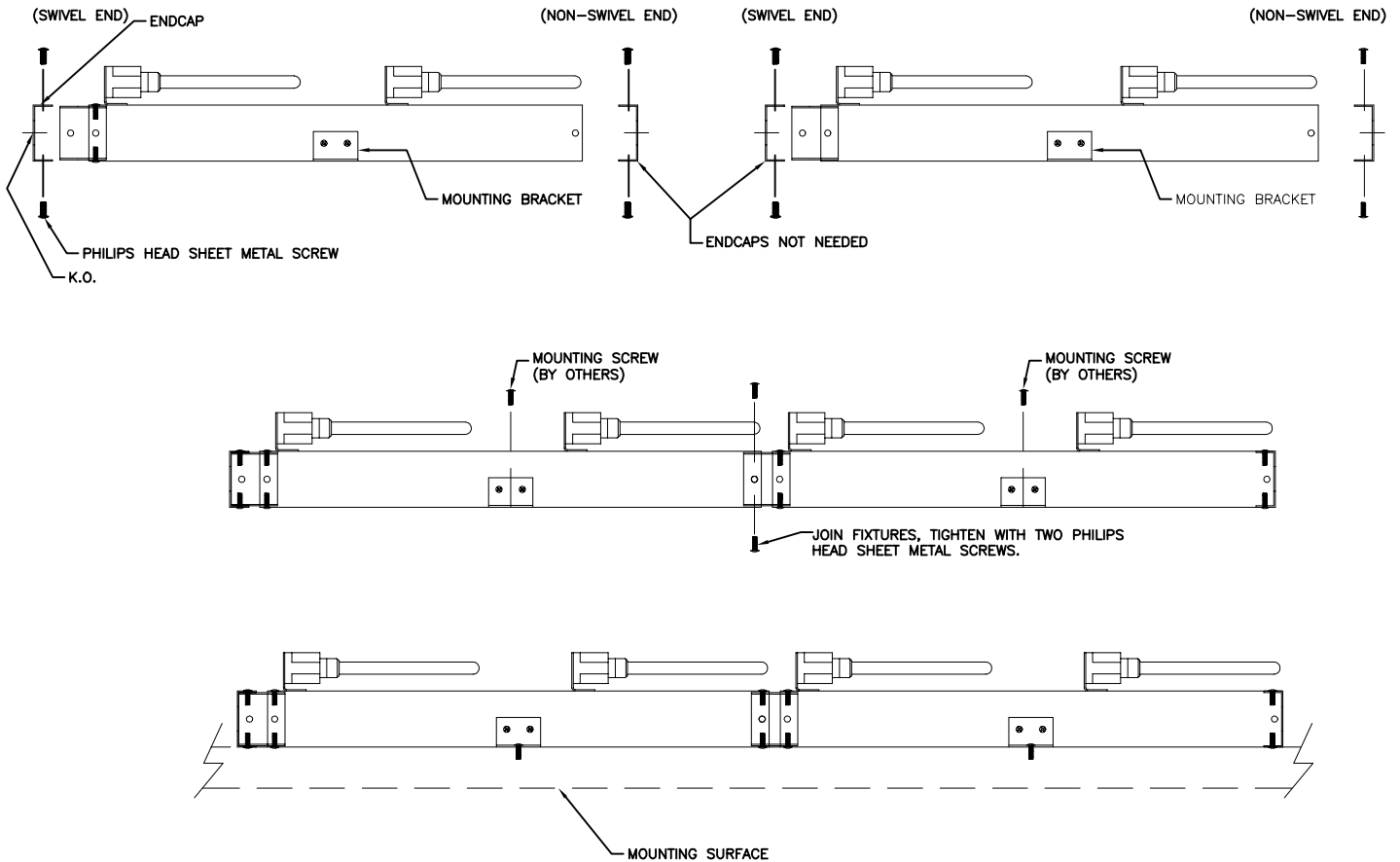
division of  
LIGHTING WORLD INC  
1703 VALLEY ROAD  
OCEAN NJ 07712  
TEL (732) 493-2666  
FAX (732) 493-2941  
www.belfer.com

TITLE NX2 & FX2 INSTALLATION INSTRUCTIONS			
DATE 7-8-97	SCALE NTS	DRAWN DK	APPROVED NA
PAGE 1 OF 2	DRAWING NUMBER P-1724-01 REV.1		

THIS DOCUMENT IS THE PROPERTY OF LIGHTING WORLD INC. NO RIGHTS ARE GRANTED FOR REPRODUCTION, DISCLOSURE, OR USE.

STANDARD  MODIFIED  CUSTOM  
COPYRIGHT © LIGHTING WORLD INC.

PLEASE READ ALL INSTRUCTIONS CAREFULLY.



NOTE: 2801 SERIES LAMP SHOWN. LAMPS WILL VARY WITH OTHER NX2 & FX2 SERIES.

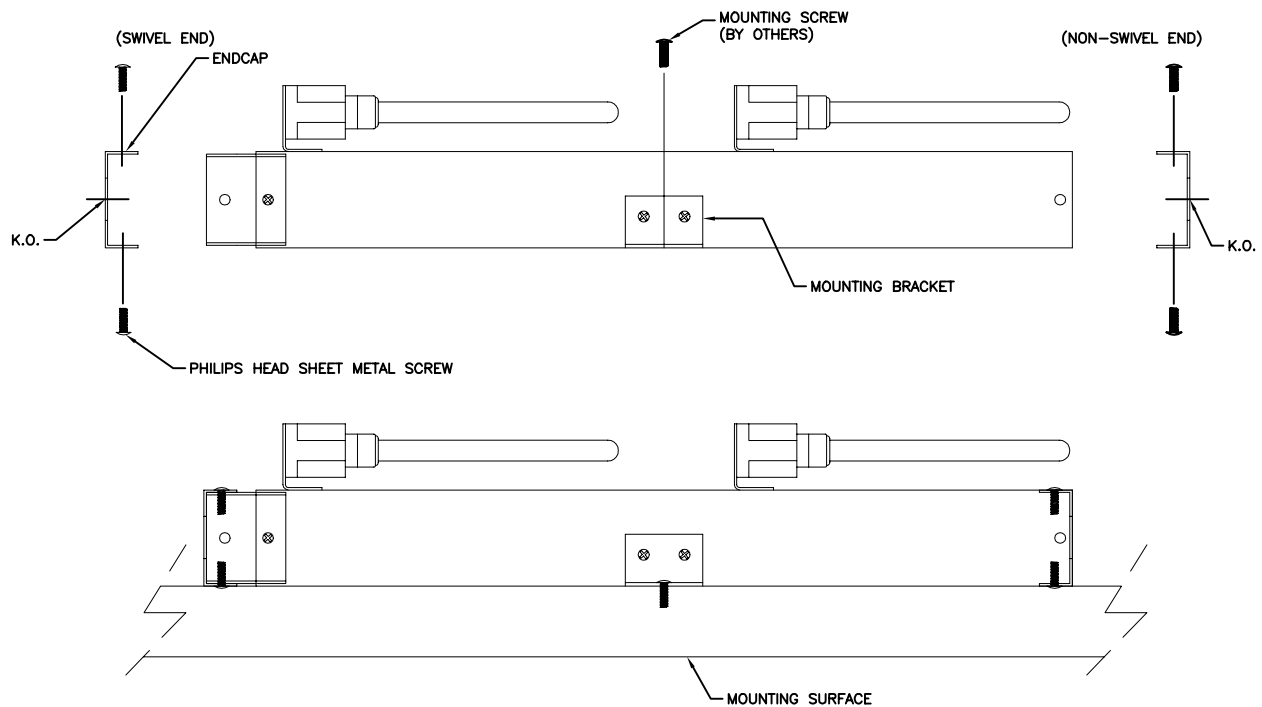
NOTE: WIRING CAN BEGIN AT EITHER END OF FIXTURE.

WIRING INSTRUCTIONS FOR JOINING MORE THAN ONE FIXTURE:

1. REMOVE SWIVEL END AND NON-SWIVEL END. (THE TWO ENDCAPS IN BETWEEN EACH JOINING FIXTURES WILL NOT BE NEEDED)
2. KNOCK OUT APPROPRIATE K.O.
3. CONNECT FITTINGS TO ENDCAP.
4. WIRE THROUGH FIXTURE PER N.E.C. CODE.
5. JOIN FIXTURES TOGETHER USING TWO OF THE PHILIPS HEAD SHEET METAL SCREWS.
6. AT THE OPPOSITE ENDCAP, INSULATE AND STORE EXTRA WIRES.
7. REPLACE ENDCAP AND TIGHTEN WITH TWO PHILIPS HEAD SHEET METAL SCREWS.
8. MOUNT FIXTURE TO SURFACE WITH MOUNTING SCREWS. (BY OTHERS)

NOTE: MOUNTING BRACKETS ARE ATTACHED TO THE FIXTURE.

PLEASE READ ALL INSTRUCTIONS CAREFULLY.



NOTE: 2801 SERIES LAMP SHOWN. LAMPS WILL VARY WITH OTHER NX2S & FX2S SERIES.

NOTE: WIRING CAN BEGIN AT EITHER END OF FIXTURE.

WIRING INSTRUCTIONS:

1. UNSCREW PHILIPS HEAD SHEET METAL SCREWS AND REMOVE ENDCAP.
2. KNOCK OUT APPROPRIATE K.O.
3. CONNECT FITTINGS TO ENDCAP.
4. WIRE PER N.E.C. CODE.
5. REPLACE ENDCAP AND PHILIPS HEAD SHEET METAL SCREWS AND TIGHTEN.
6. REMOVE OPPOSITE ENDCAP, INSULATE AND STORE EXTRA WIRES.
7. REPLACE ENDCAP. TIGHTEN WITH TWO PHILIPS HEAD SHEET METAL SCREWS. TIGHTEN.
8. MOUNT FIXTURE TO SURFACE WITH MOUNTING SCREWS. (BY OTHERS)

NOTE: MOUNTING BRACKETS ARE ATTACHED TO FIXTURE.

\* SEE OPPOSITE SIDE FOR INSTRUCTIONS ON JOINING TWO FIXTURES.\*

REV.1 7-8-97 DK

\* ALL DIMENSIONS SHOWN ARE IN INCHES

**BELFER**

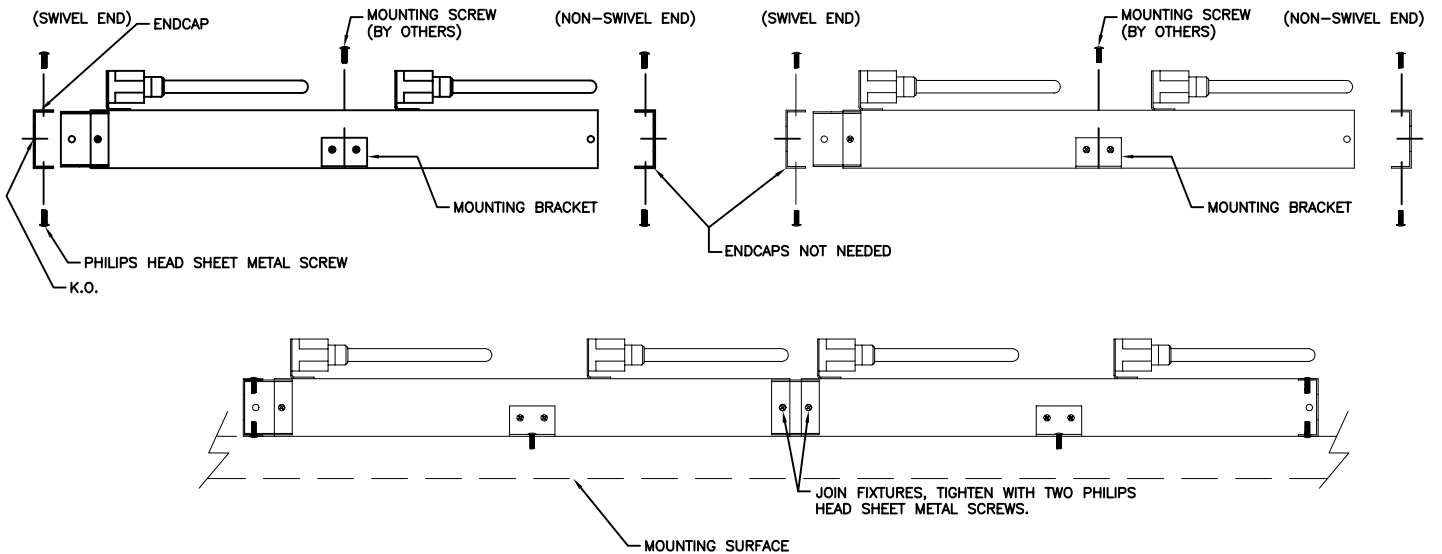
division of  
LIGHTING WORLD INC  
1703 VALLEY ROAD  
OCEAN NJ 07712  
TEL (732) 493-2666  
FAX (732) 493-2941  
www.belfer.com

TITLE		NX2S & FX2S INSTALLATION INSTRUCTIONS		
DATE	SCALE	DRAWN	APPROVED	
6-30-97	NTS	DK	NA	
PAGE	DRAWING NUMBER		REV.1	
1 OF 2	P\ 1723-01			

THIS DOCUMENT IS THE PROPERTY OF LIGHTING WORLD INC. NO RIGHTS ARE GRANTED FOR REPRODUCTION, DISCLOSURE, OR USE.

STANDARD     MODIFIED     CUSTOM  
COPYRIGHT © LIGHTING WORLD INC.

PLEASE READ ALL INSTRUCTIONS CAREFULLY.



NOTE: WIRING CAN BEGIN AT EITHER END OF FIXTURE.

WIRING INSTRUCTIONS FOR JOINING MORE THAN ONE FIXTURE:

1. REMOVE SWIVEL END AND NON-SWIVEL END. (THE TWO ENDCAPS IN BETWEEN EACH JOINING FIXTURES WILL NOT BE NEEDED)
2. KNOCK OUT APPROPRIATE K.O.
3. CONNECT FITTINGS TO ENDCAP.
4. WIRE THROUGH FIXTURE PER N.E.C. CODE.
5. JOIN FIXTURES TOGETHER USING TWO OF THE PHILIPS HEAD SHEET METAL SCREWS.
6. AT THE OPPOSITE ENDCAP, INSULATE AND STORE EXTRA WIRES.
7. REPLACE ENDCAP AND TIGHTEN WITH TWO PHILIPS HEAD SHEET METAL SCREWS.
8. MOUNT FIXTURE TO SURFACE WITH MOUNTING SCREWS. (BY OTHERS)

NOTE: MOUNTING BRACKETS ARE ATTACHED TO THE FIXTURE.